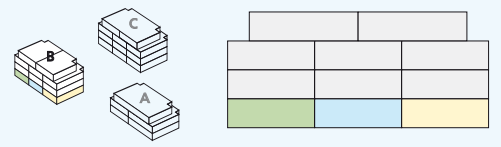
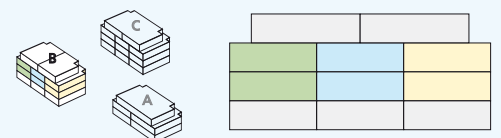


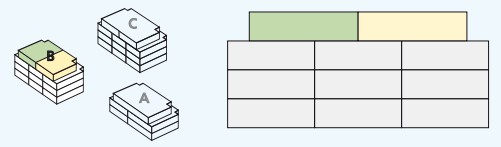
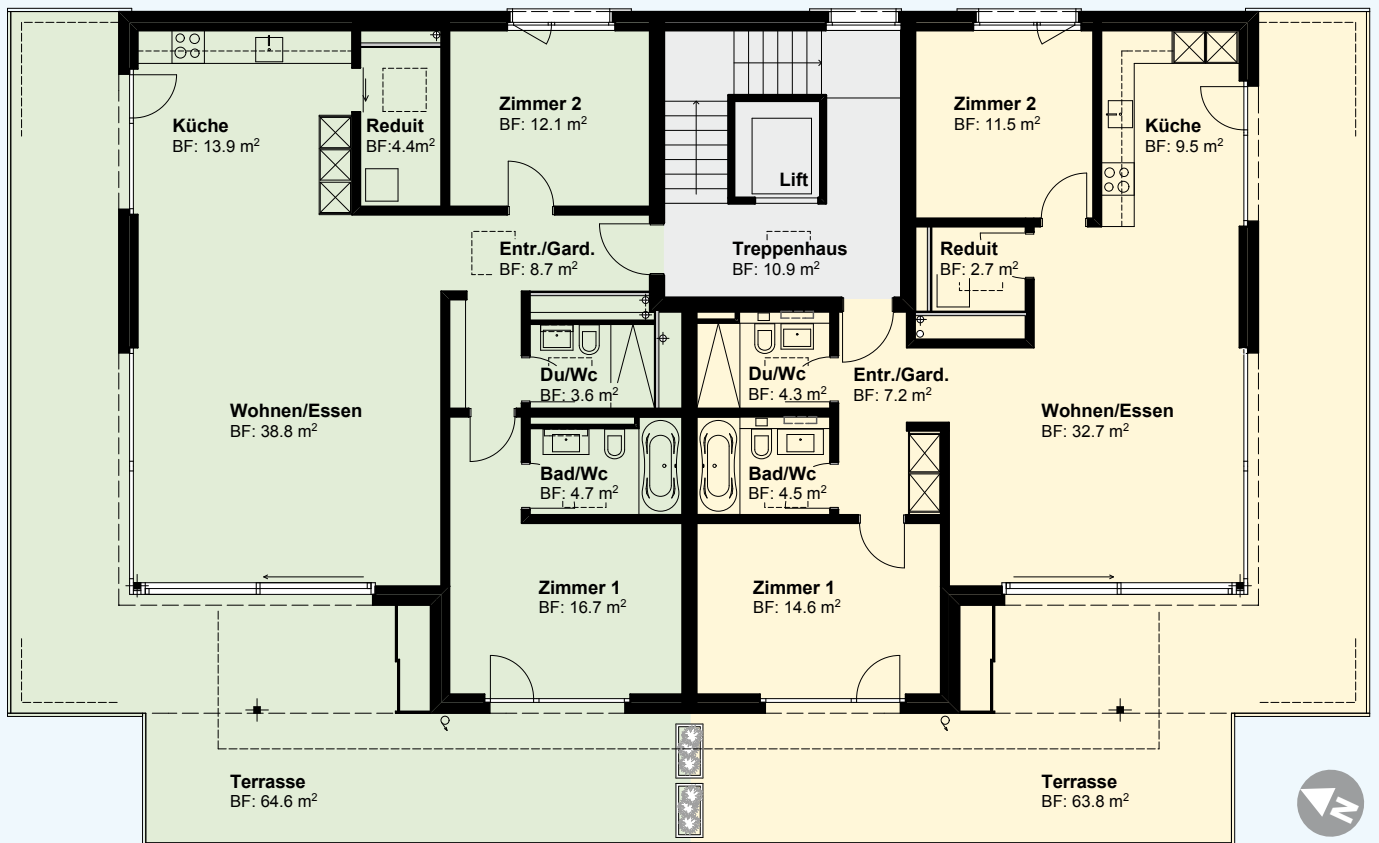
# Grundriss Haus B - Erdgeschoss



## Grundriss Haus B - 1. und 2. Obergeschoss

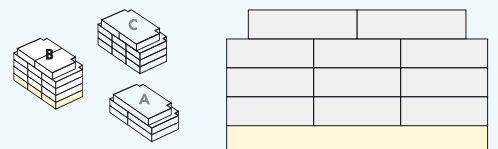
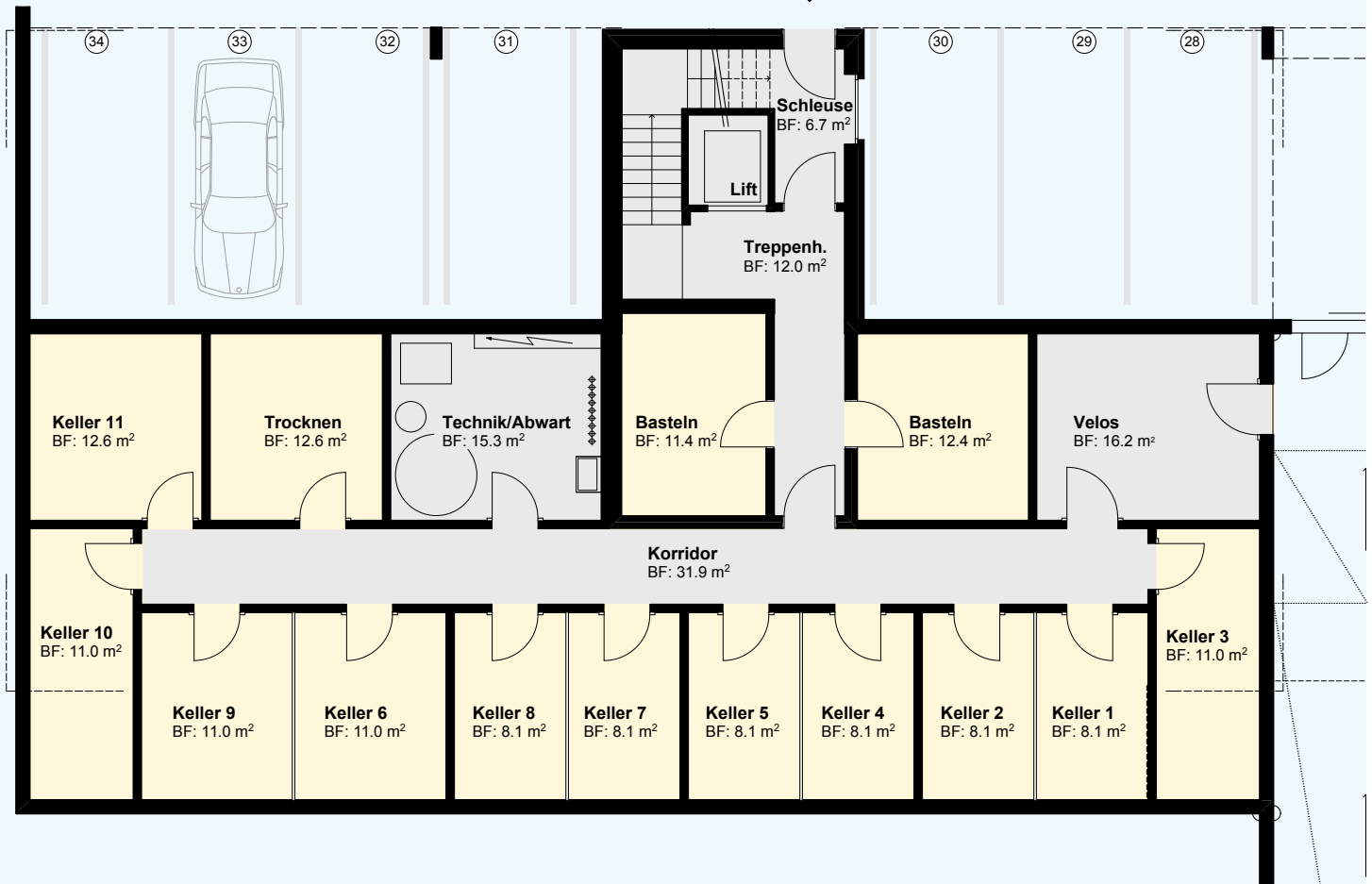


# Grundriss Haus B - Attika

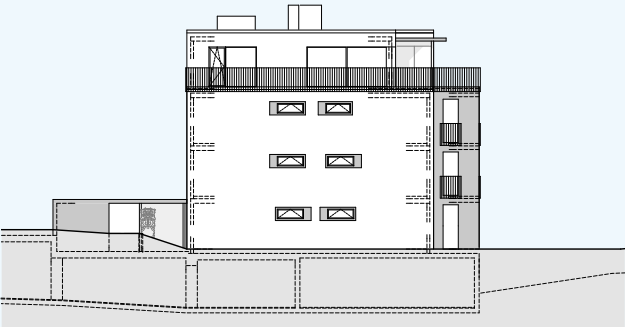


## Grundriss Haus B - Kellergeschoss

Eingang  
Haus B



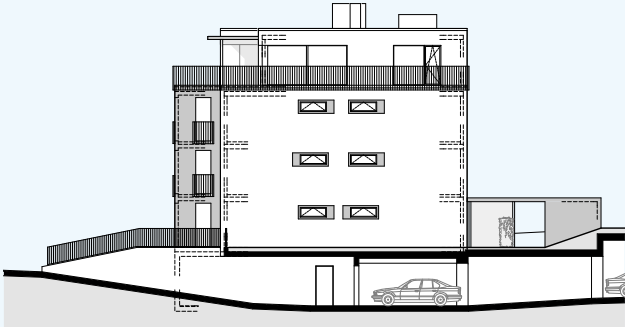
# Fassadenansichten



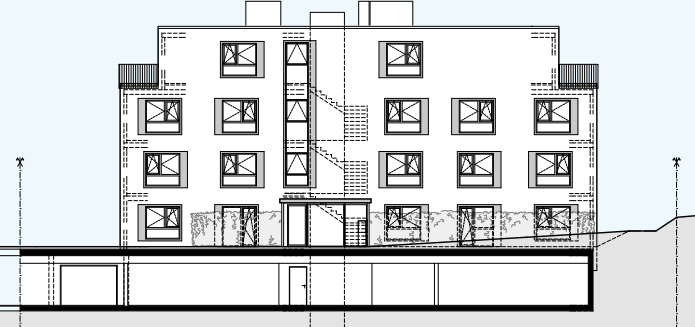
Haus B / Nordfassade



Haus B / Westfassade



Haus B / Südfassade



Haus B / Ostfassade